



QMU QUEEN
MARGARET
UNION

VENUE PACK 2025



LIVE SINCE 1968

HERE FROM THE START!

The Queen Margaret Union has been at the heart of the music scene in Glasgow for over 50 years.

Opening as a music venue in 1968, the QMU has seen some of the most notable names in music take to the stage. The QMU is the longest continually running live music venue in Glasgow, with a legendary history and atmosphere, it's a prime location to see both touring and local acts.

Originally established in 1890 as the 'Women's Union' at the University of Glasgow, the Union soon outgrew its original location and established itself in the brutalist style building on University Gardens, in the heart of the West End of Glasgow.

The first major musical act to appear at the QMU was The Move in 1968 with hundreds more following on throughout the decades. The Move played to around 700 students who each paid 12 shillings (60 pence) entry, with the venue allowing a bar to run until 10pm.

Almost every type of musical genre has featured at the QMU throughout the years, Nirvana, Queen, Lou Reed, Yeah Yeah Yeahs, The Smiths, Simple Minds, Motorhead, Charlie XCX, Biffy Clyro, Franz Ferdinand, and The Who are just some of the acts who have all graced the stage. In the early days, these gigs ran alongside more traditional 'dances' which were also held at weekends.

Discos were introduced during the 1970s with DJs such as the Radio Clyde legend Tom Ferrie, former STV presenter Paul Coia and even John Peel doing sessions at the venue. This tradition carried on with the many student club nights such as the legendary Cheesy Pop, Rev and Propaganda.

Recent acts include Black Midi, Sam Fender, Lucia and the Best Boys, Shame, Snail Mail, Peach Pit, and Enter Shikari. We know how to host a good show!



Glasgow QMU - Venue Technical Specifications

Address & Contact Details

Events Coordinator: Stewart Christmas
Contact: s.christmas@qmunion.org.uk

Technical Manager: Alan Singfield
Contact: alan@asliveaudio.com

Address: 22 University Gardens Glasgow G12 8QN

Contact number: 0141 339 9784

Technical Riders

Please send all technical riders and advances to the above contact details.

Venue Capacity

Full Venue – 900 (Standing and Balcony)
Downstairs Only – 700 (Standing)



Load In / Out

Equipment can be loaded in through the front door. There is ramp access from pavement level, and usually vehicle parking is close to the ramp.

4 Crew minimum are required for PA load in and load out. More may be required depending on added artist requirement.

We recommend Mad Crew and quotes are available on request. Crew are at the expense of the Promoter.

Standard PA Load in is Midday, Band load in 1pm. Early load-ins are currently charged at £65 per hour. PA companies and other suppliers can also add their own early load in fees, at their own discretion. Please confirm with them directly in case of early load in.

GOODS LIFT

A goods lift is available which can lift from ground level to foyer level - however we do not normally use the lift for band or PA access.

Maximum lift load capacity 680kg/1500lbs

Dimensions:

Height - 2.28M/7'6"

Width - 1.47M/4'10"

Depth - 1.27M/4'2"

Please note that both load in routes pass through a public foyer, this area can be very busy during term time especially weekdays between 12pm- 2pm.



Bus Parking

All bus parking should be pre-arranged with promoter's representative and venue in advance of show. Parking is restricted, but alternative arrangements can be made in advance. Power is provided for one Bus via 32 Amp single phase, or 16 Amp single phase only.

Noise, Age Restrictions and Running Times

Standard PA Load in is Midday, with band load in at 1pm, Soundchecks possible until 1 hour before doors.

We operate a dark stage policy for the benefit of all venue staff an hour before doors [usually between 6pm and 7pm]. This allows venue techs a suitable break, but also allows for bars and security to set up and brief staff prior to the venue opening to the public.

Standard doors are 7pm, early doors will be charged accordingly.

Stage curfew for over 14s [Under 16s accompanied by adult] is 10pm, venue curfew 10.30pm

Stage curfew for over 18s is 10.30pm venue curfew is 11pm

18+ shows may run later but may incur additional costs. Please discuss in advance before confirming.

Dressing room curfew is Midnight or 2 hours after stage curfew.



Dressing Rooms

We have 2 dressing rooms available, one for main and one for supports. Both are equipped with fridges, seating, mirrors and wifi.

Laundry

There are no laundry facilities on site, however there are laundrettes nearby.

Showers

There are two private showers and two private toilets near dressing room.

Towels

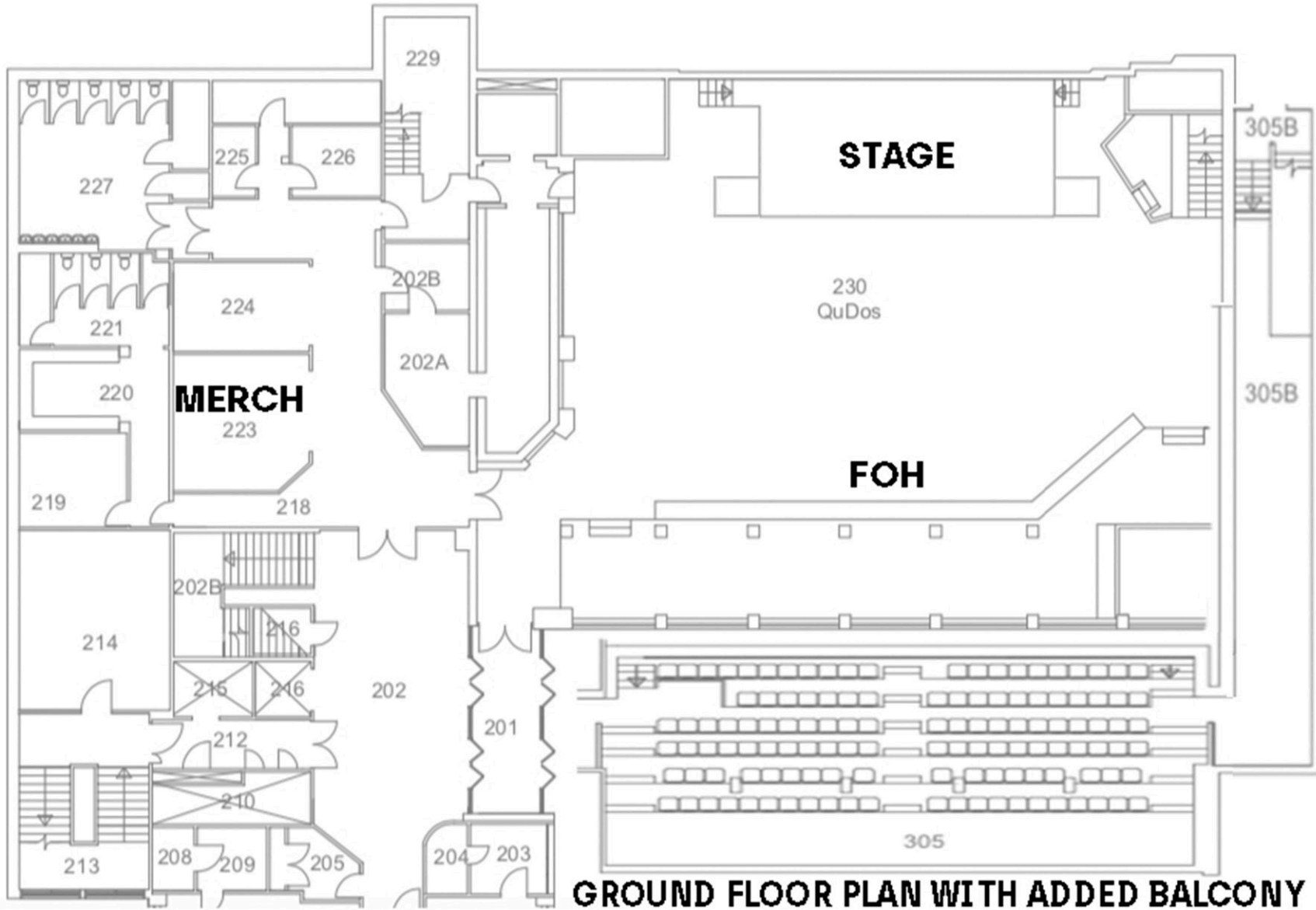
Shower and Stage towels are charged at £1 plus VAT each to cover our laundry costs.

Merch

We don't charge bands for selling Merch; however, we ask for a voluntary donation to Mental Health Foundation and Cash for Kids.

If you've had a good night put some money to a good cause. We'll provide a form on the night. The merch area is used until 3pm by the Asian Takeaway, access for merch will be from 3pm onwards.





Venue Dimensions

Venue – 13.50m length x 18.00m Wide

Stage – 9.85 wide x 4.50m Deep x 0.8m height

Rigging

1x 10m lengths of 300mm box truss positioned as Back truss

1 x 5m Square Audience Box Truss

Back truss

Trim Height - 4.3m from stage

Load - 500 kgs

Operated on four D8+ Motors

Front Truss/Dancefloor Box Truss

Trim height - 5.3m from floor

Load - 500kgs

Operated on motors - motor control at Stage Left with Remote Control

Stage risers

2 of 8' x 4' steel deck risers available on request with 1' legs.

Mojo barrier

Venue has mojo barrier to cover stage and FOH. It is not permanently installed, and local crew are required to erect and dismantle it but is included in the hire fee.



Power

House supply is 125A 3-phase 415v.

All house equipment - including all installed house lighting, dimmers and audio - is connected to this supply.

Sound power

Visiting audio systems have a 63/3 red Ceeform available - 63 amp 3 phase 415v 3p+N+E - stage left. Rented audio systems connect to this supply. If you require power for your own equipment in addition to this (such as touring your own consoles) please discuss in advance with your promoter's rep or the venue technical manager.

Lighting power

Visiting lighting are provided a 63/3 red Ceeform - 63 amp 3 phase 415v 3p+N+E - stage right. Any other connections can be supplied at promoter's expense and subject to availability of rental items. The QMU does not have any other power distribution available without prior arrangement.

Audio Visual

1 x Epson EB-4770W Projector @ FOH (5000 Lumens only which is suitable for some events but doesn't compete with house lighting for gigs)

1 x 6m x 4m powered front projection screen, mounted rear of stage.

HAZE: Please let us know in the advance if you are bringing your own smoke machines. The venue is isolated, but other areas of the building are not so we cannot do excessive haze or smoke.



Stage Lighting

Lighting Fixtures Back Truss:

8x Chauvet Rogue R1X Spot

Box Truss Front/Dance Floor:

2 x Chauvet Q Wash 436z LED 4 x Intimidator 250 LED Spots

Generic fixtures

2 x Thomas 4-way molefays

24 x Par 64s on Back truss

6 x Par 64s on Front truss

Mirror ball with remote control

Look Solutions Unique 2.1 Hazer

Dimming

36-way ETC dimmer modules

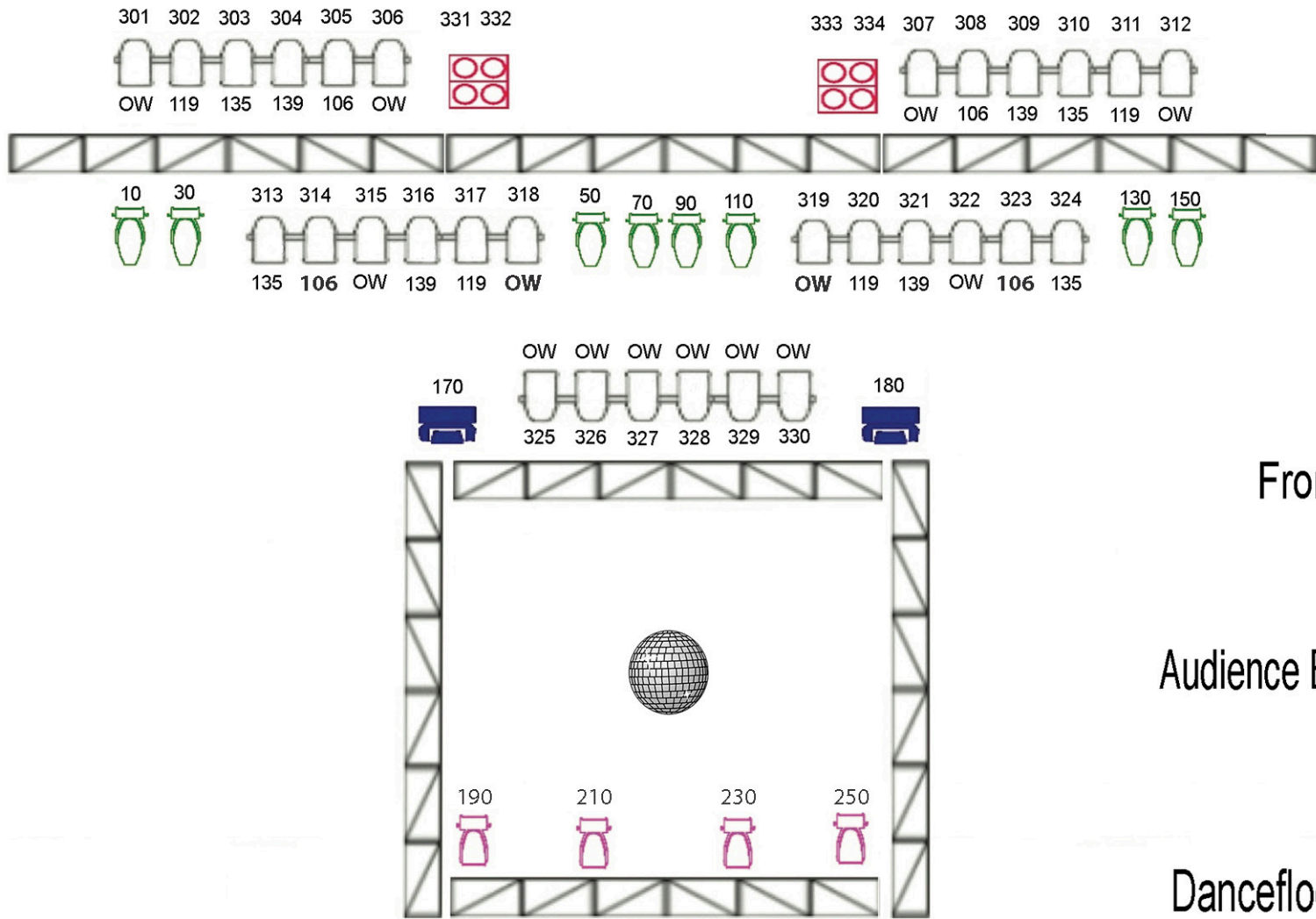
4 way Anytronic Dimmer modules

Lighting Control

1 x ChamSys MQ80 Console

Please note: There is no space for followspots and operators in the venue without adjusting capacity which would need to be agreed before going on sale.







Back Truss


Front Truss


Audience Box Truss

Dancefloor Truss

 Chauvet R1X Spot (19ch mode)

 Chauvet Q-Wash 437z (10ch mode)

 Chauvet DJ Intimidator Spot 250 (13ch mode)
Patch as Intimidator 255 on MagicQ

 Thomas 4 way molefays



FOH Position

On dance floor in centre of room, in front of the stage.

FOH PA

In house equipment:

12 x D&B C4 Tops
12 x D&B C4 Subs
6 x D&B P1200 amplifiers

Please note:

The venue only provides a "racks and stacks" system - loudspeakers and amplifiers only. Consoles, monitors, mics, stands, power distribution and line system need to be hired in on a show by show basis at the promoter's expense.

The house PA and lighting rig are fixed. Any removal needs to be discussed in advance and is subject to fees.

DJ Equipment

The QMU has DJ equipment suitable for student events. If you have specific requirements, please let us know and we can source them for you.



IRON MAIDEN JUDAS PRIEST
CLIFF RICHARD GENESIS BILLY CONNOLLY
STRANGLERS LOU REED THE SMITHS
WET WET WET SIMPLE MINDS THE BANGLES
PIXIES TEENAGE FANCLUB HUE & CRY
SANDIE SHAW THE BLUEBELLS PREFAB SPROUT
THE PROCLAIMERS THE BOOMTOWN RATS BILLY BRAGG
THE REDSKINS THE PSYCHEDELIC FURS
EVERYTHING BUT THE GIRL MARC ALMOND
DEACON BLUE PAULINE MURRAY GOODBYE MR MCKENZIE
WATERBOYS FAITH NO MORE RUNRIG
GARY NUMAN THE SUNDAYS CAPTAIN AMERICA
THE FALL SISTERS OF MERCY RED HOT CHILLI PEPPERS
NIRVANA SOUNDGARDEN LUSH
THE CRANBERRIES THE POGUES SPINNAKULIZED
SMASHING PUMPKINS HOLE MURDER
MANDA PALMER IAN DURY & THE BLOCKHEADS
ELE & SEBASTIAN IDLEWILD THE CREATURES
LONG STREET PREACHERS THE LEMONHEADS
HAPPY MONDAYS CARL COX APHEX TWIN
MURKIN DEFTONES DODGY SLAM
THE STATE FOALS KEANE

TOILETS
CASH
CLOAKROOM

VENUE

ASHLEY TISDELL
ELTON JOHN
ANDREW W.K.
JIMMY Eat World
DISTURBED
BLAS VEGAS
TWIN ATLANTIC
EDGE
REGINA SPEKTOR
THE AUTOMATIC
ALTER BRIDGE
THE KODINS
DRENGE
KYLE FALCONER
TOM WALKER
MARINA & THE DIAMONDS
KALAMASH
JULIES
THE
IF LINK